



# BX3619

## 2014 Subaru Forester Installation Instructions

Serial Number

Attachment Tab Height: 16-1/2"

Attachment Tab Width: 24"

Please read BOTH these Installation Instructions and the General Instructions prior to installing or operating this equipment.

- Blue Ox® towing products and accessories are intended to be installed by Blue Ox® Dealers who are familiar with our products and have the equipment and knowledge necessary to do "fit work". If needed, Blue Ox® Dealers can be found at [www.blueox.com](http://www.blueox.com) or by contacting our Customer Care Department at (402) 385-3051.
- Many Blue Ox® baseplates are designed to use existing holes and hardware to mount the baseplate to the towed vehicle. Even though bolts are there, do not assume they are adequate for baseplate mounting. Always use the hardware supplied in the hardware kit and existing hardware as specified in the installation instructions.

**Bolt Torque Specifications**  
Torque in Foot-Pounds for Inch Bolts

Bolt Size	Grade 5	Grade 8
1/4"	10	14
5/16"	19	29
3/8"	33	47
7/16"	54	78
1/2"	78	119
5/8"	154	230
3/4"	257	380



**Bolt Torque Specifications**  
Torque in Foot-Pounds for Metric Bolts

Bolt Size	Grade 8.8	Grade 10.9
6MM	6	8
8MM	16	22
10MM	31	40
12MM	54	70
14MM	89	117
16MM	161	230
18MM	222	318

If the front of your vehicle looks different than this, please contact us at (402)385-3051.

**Reference your vehicle owner's manual for manufacturer's towing specifications.**

**! WARNING**

Failure to read and follow these instructions could result in separation of the towed vehicle from the tow bar, causing property damage, loss of towed vehicle, personal injury or death.

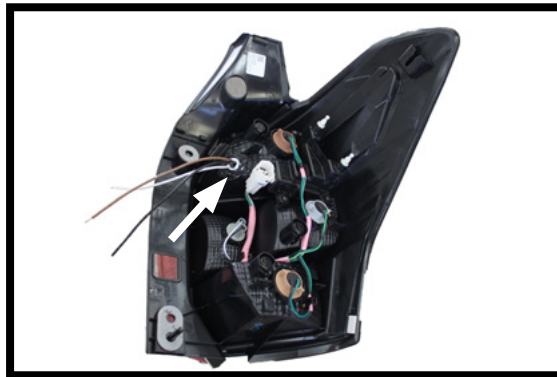
BX3619  
2014 Subaru Forester  
Installation Instructions

**Instruction Notes:** The fascia and metal bumper are removed and reinstalled for the baseplate installation. Some drilling and trimming is required.

Place all components that are removed on a flat, sturdy surface. All items will be reinstalled unless otherwise noted after the baseplate is installed.

The dimensional variations between otherwise identical vehicles can be considerable. While the baseplate was designed for easy installation, it may be necessary to tailor the baseplate slightly to compensate for vehicle manufacturer's tolerances.

The BX8869 Tail Light Wiring Kit is recommended for this vehicle.



Drill a hole according to the tail light wiring kit instructions.

**NOTICE**

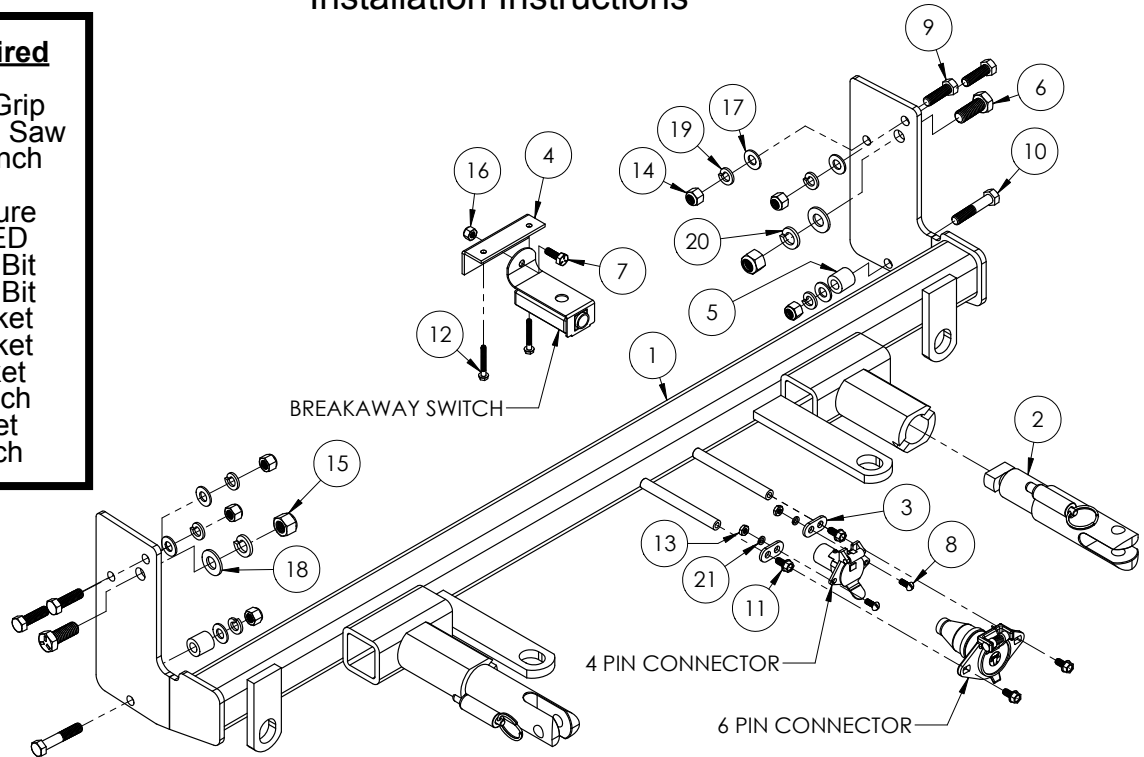
- Handling of some cosmetic parts when installing this product may require the use of protective covers, rags, specialty tools, etc. to prevent damage.
- When using power drills be aware of the dangers of torque and drill bit length.
- When using a reciprocating saw be aware of objects behind the cutting surface.
- Use a good quality paint to spray cut edges of frame to prevent rusting.
- Be sure that **ALL** electrical connections are plugged in and accessories are functioning properly before reinstalling the fascia.
- Do not use the towed vehicle for storing luggage, equipment, etc. This may cause you to exceed the towing capacity of the tow bar, baseplate and its accessories.
- Be sure to use Loctite® Red on all bolts before tightening. Tighten all bolts according to the torque chart provided.
- Dealer or installer be certain the user receives these instruction sheet.
- If the baseplate is in an accident, it must be replaced. **DO NOT** use it again! An accident can cause unseen damage and using it again could result in more damage or serious injury. **DO NOT** use the baseplate if it is damaged or missing parts.

# BX3619

## 2014 Subaru Forester Installation Instructions

### Tools Required

Large Vise Grip  
Reciprocating Saw  
Torque Wrench  
Drill  
Tape Measure  
Loctite® RED  
13/32" Drill Bit  
17/32" Drill Bit  
10MM Socket  
12MM Socket  
9/16" Socket  
9/16" Wrench  
3/4" Socket  
3/4" Wrench

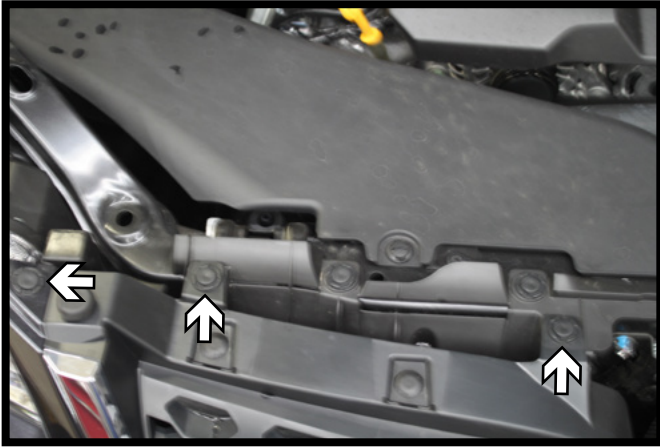


Item No.	Part No.	Description	Qty.
1.....	61-7200 .....	BX3619 Baseplate.....	1
2.....	62-3469 .....	Attachment Tab Assembly with Hole .....	2
3.....	101-5822 .....	4 Way Connector Adapter .....	2
4.....	102-7159 .....	Breakaway Bracket .....	1
5.....	107-1753 .....	3/4"Ø x 3/4"L Spacer Tube .....	2
6.....	201-0011 .....	1/2"-13 x 1-1/4" Hex Head Bolt, Grade 5, ZP .....	2
7.....	201-0050 .....	1/4"-20 x 3/4" Hex Head Bolt, Grade 5, ZP .....	1
8.....	201-0192 .....	#10-32 1/2" Round Slotted Head Screw.....	2
9.....	201-0368 .....	3/8"-16 x 1-1/4" Hex Head Bolt, Grade 5, ZP .....	4
10.....	201-0444 .....	3/8"-16 x 2" Hex Head Bolt, Grade 5, ZP .....	2
11.....	201-0553 .....	1/4"-20 x 1/2" Hex Wshd Bolt Type F TCS, ZP.....	2
12.....	201-0654 .....	#10-16 x 1" Self Drilling Screw, ZP.....	2
13.....	202-0047 .....	#10-32 Hex Nut .....	2
14.....	202-0090 .....	3/8"-16 Hex Nylon Insert Lock Nut, ZP.....	6
15.....	202-0094 .....	1/2"-13 Hex Nylon Insert Lock Nut, ZP.....	2
16.....	202-0102 .....	1/4"-20 Hex Nylon Nut, ZP .....	1
17.....	203-0003 .....	3/8" Flat Washer, ZP.....	6
18.....	203-0005 .....	1/2" Flat Washer, ZP.....	2
19.....	203-0010 .....	3/8" Lock Washer, ZP .....	6
20.....	203-0012 .....	1/2" Lock Washer, ZP .....	2
21.....	203-0054 .....	#10 Lock Washer, ZP .....	2
22.....	226-0046(not shown) .....	Class III Safety Cables .....	2
23.....	229-0359(not shown) .....	3/8" Quicklink, ZP .....	2
24.....	290-0437(not shown) .....	Black Cap Plug Receiver.....	2

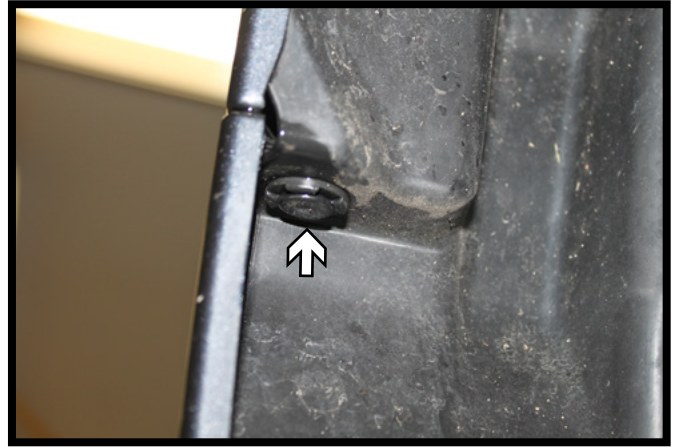
### **Important:**

Use only genuine factory replacement parts on your baseplate. Do **NOT** substitute homemade or non-typical parts. If a bolt is lost or in need of replacement, for your safety and the preservation of your baseplate, be sure to use a replacement bolt of the same grade (In most cases it will be Grade 5, please reference the parts list above). Replacement parts may be ordered through your nearest Blue Ox® Dealer or Distributor. Failing to follow and/or altering these installation instructions in either installation or required equipment will void the manufacturer's warranty. Towing behind a non-motorized vehicle will void the warranty.

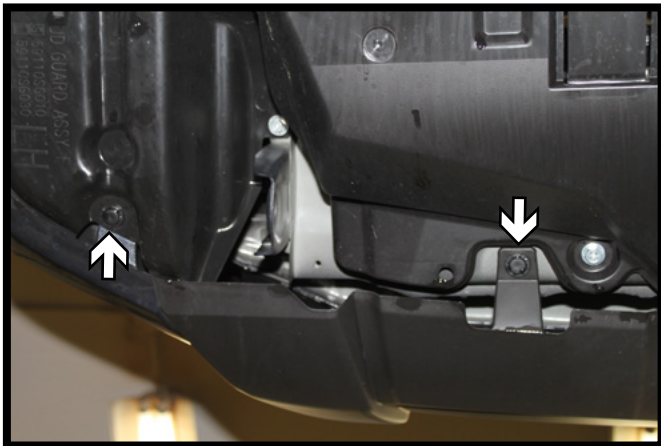
BX3619  
2014 Subaru Forester  
Installation Instructions



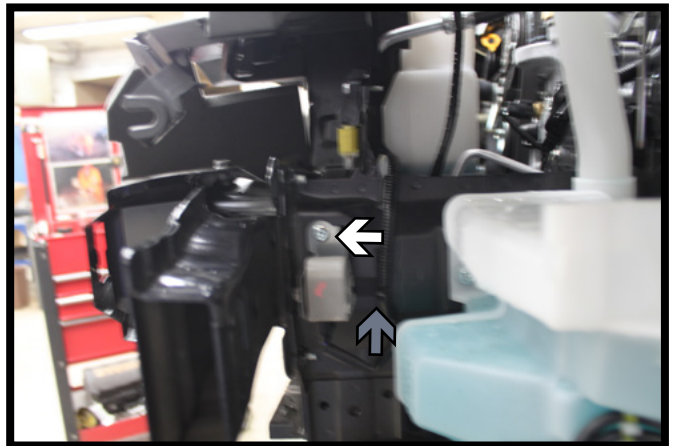
1. Remove the three (3) push pins from the top edge of the fascia. Do this on both sides of the vehicle.



2. In the wheel well where the fascia meets the fender, remove the push pin. Do this on both sides of the vehicle.

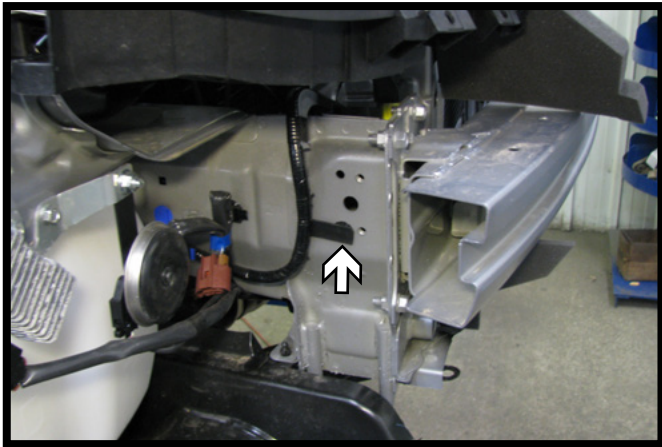


3. On the underside of the fascia, remove the two (2) push pins. Do this on both sides of the vehicle.

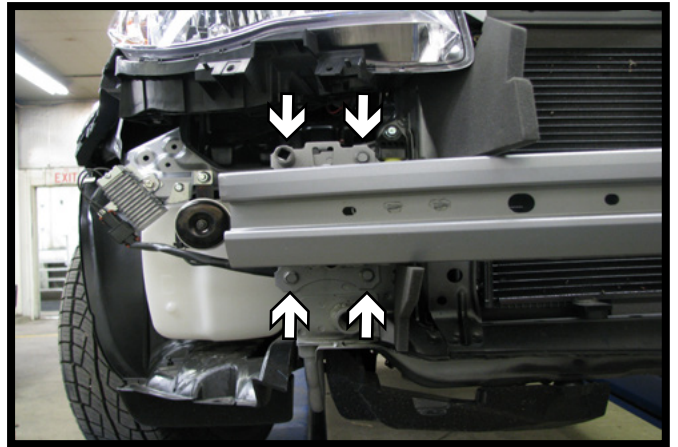


4. On the driver side, using a 10MM socket, remove the bolt from the sensor bracket. Remove the wiring clip and move the sensor and wiring out of the way (gray).

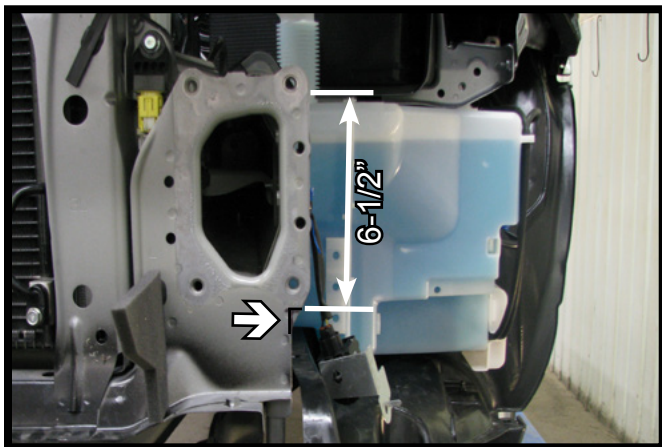
BX3619  
2014 Subaru Forester  
Installation Instructions



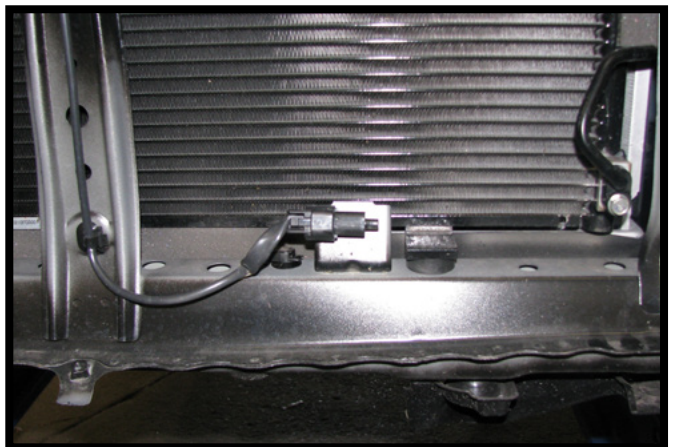
5. On the passenger side, remove the wiring clip and move the wires out of the way.



6. Using a 12MM socket, remove the four (4) bolts from the metal bumper. Do this on both sides of the vehicle.

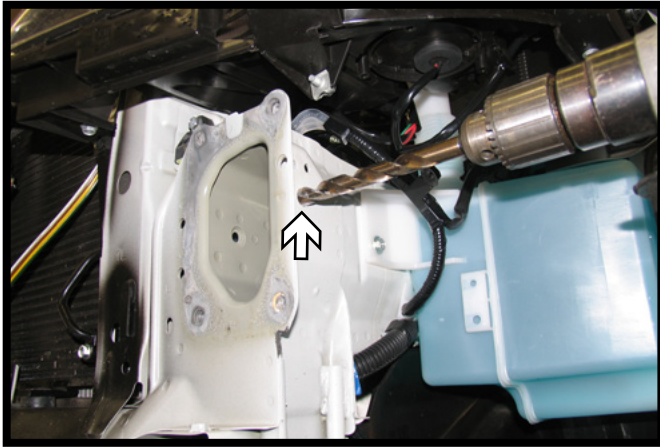


7. Using a reciprocating saw, make a notch down 6-1/2" from the top of the frame back and down flush with the face of the frame. Do this on both sides of the vehicle.

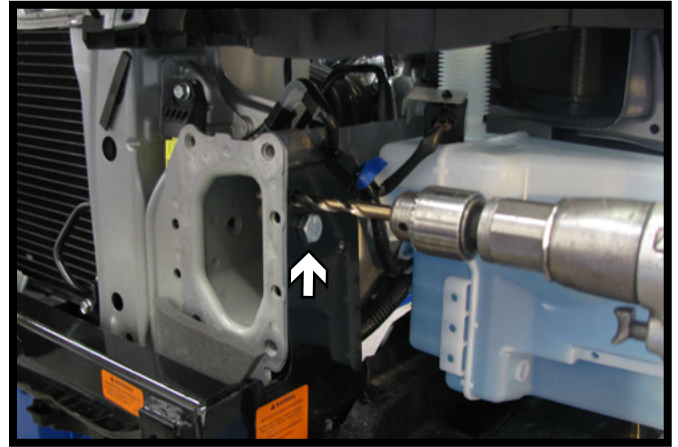


8. Bend the temperature sensor bracket inwards toward the radiator.

BX3619  
2014 Subaru Forester  
Installation Instructions

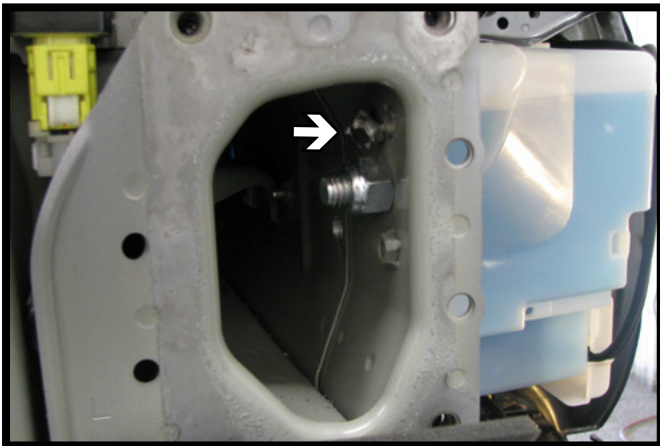


9. Using a 17/32" drill bit, ream the existing hole in the frame as shown. Do this on both sides of the vehicle.

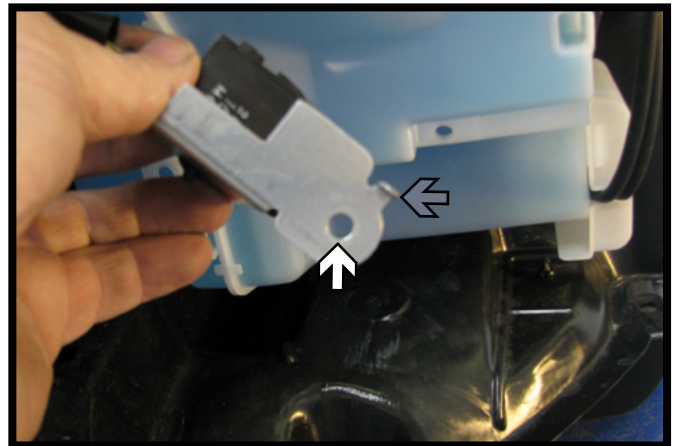


10. Tip the baseplate into position. Install a 1/2"-13 x 1-1/4" bolt with 1/2" flat and lock washers into the existing hole and secure with a 1/2"-13 lock nut on the inside of the frame. Do this on both sides of the vehicle. Level the baseplate and fully tighten both bolts.

Using a 13/32" drill bit, drill the remaining six (6) holes thru the frame on the driver and passenger sides.

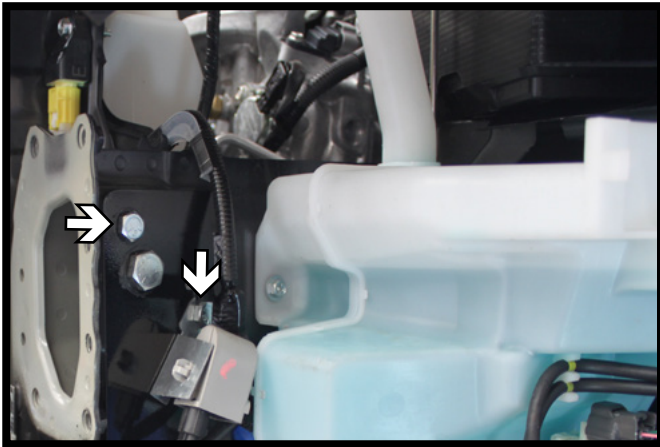


11. Using a chisel, knock off the nut on the inside of the frame.



12. Using a 13/32" drill bit, ream out the hole in the sensor bracket (white). Then flatten or trim off the alignment tab (gray).

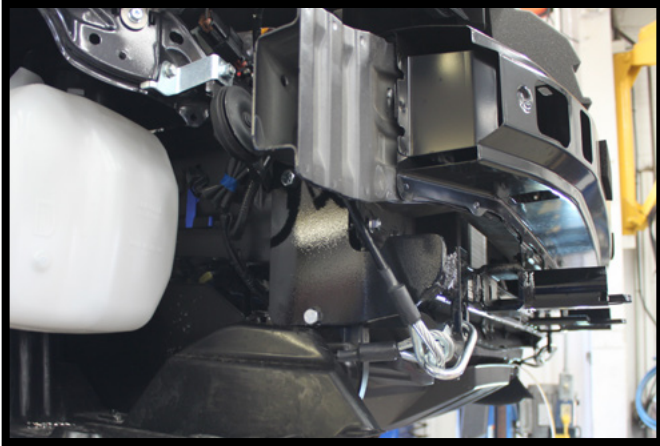
BX3619  
2014 Subaru Forester  
Installation Instructions



13. Install 3/8"-16 x 1-1/4" bolts, 3/8" flat & lock washers and 3/8" lock nuts into the top holes of the baseplate. Do this on both sides of the vehicle.  
Note: On the driver side reattach the sensor with the 3/8" fasteners as shown.



14. On the bottom baseplate hole, insert the spacer tube between the frame and the baseplate. Insert a 3/8"-16 x 2" bolt, 3/8" flat & lock washer and 3/8" lock nut. Do this on both sides of the vehicle.

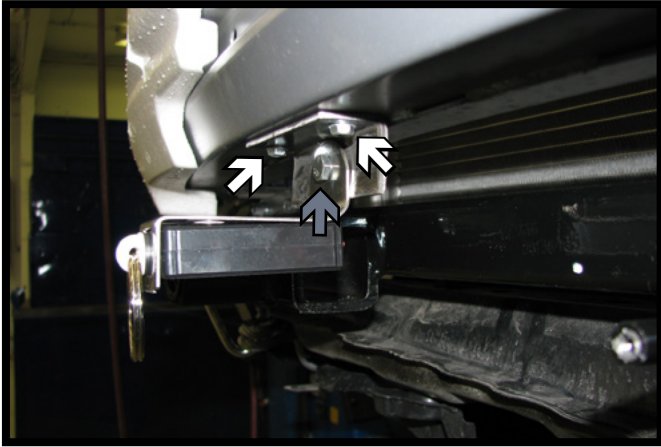


15. Attach the permanent baseplate safety cables to the provided convenience link on the baseplate. The photo above shows the recommended installation of the cables to frame of vehicle. Additional options may interfere with suggested mounting; in this case, secure the cables to a solid piece of the frame as described in the instructions included with the permanent baseplate safety cables. Be sure the safety cables do not rub against any hoses or moving parts. Do this on **BOTH** sides of the vehicle.

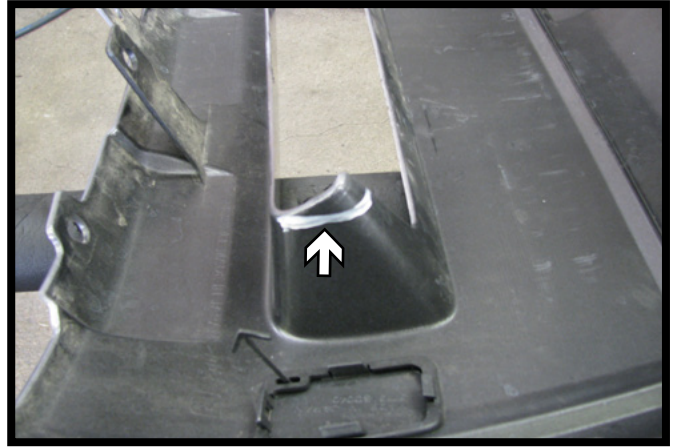


16. Reinstall the metal bumper with the existing bolts. Use two (2) 5/16" washers on bottom as spacers.

BX3619  
2014 Subaru Forester  
Installation Instructions



17. **Optional:** Attach the breakaway bracket to the underside of the bumper with two (2) #10-16 x 1" screws (white). Attach the breakaway to the bracket with a 1/4"-20 x 3/4" bolt and 1/4" nut (gray).



18. Hold the fascia as close to its original position and mark the backside of the fascia, trim as needed. Reinstall the fascia.

## CUSTOMER SERVICE COMMITMENT

Blue Ox® is committed to providing you with exceptional customer care throughout your lifetime with our products. Our team is here to assist you with any questions you may have regarding the performance of your product. Simply call (402) 385-3051 and you can speak with our customer care team.

Additionally, please visit our website to see which rallies our Destination America team will be attending. For a nominal fee, our service technician will service your towing system to ensure it's in proper working condition. Also, as a commitment to our customers, should you visit our factory, you can stay at our full service Blue Ox® campground at no charge along with enjoying a factory tour.

Again, thank you for being our customer and for the confidence you have shown in the performance of our products. It is because of customers like you we enjoy the success we have today.

© 2012 Blue Ox  
One Mill Road, Industrial Park  
Pender, Nebraska 68047  
Phone: (402) 385-3051  
Fax: (402) 385-3360  
www.blueox.com